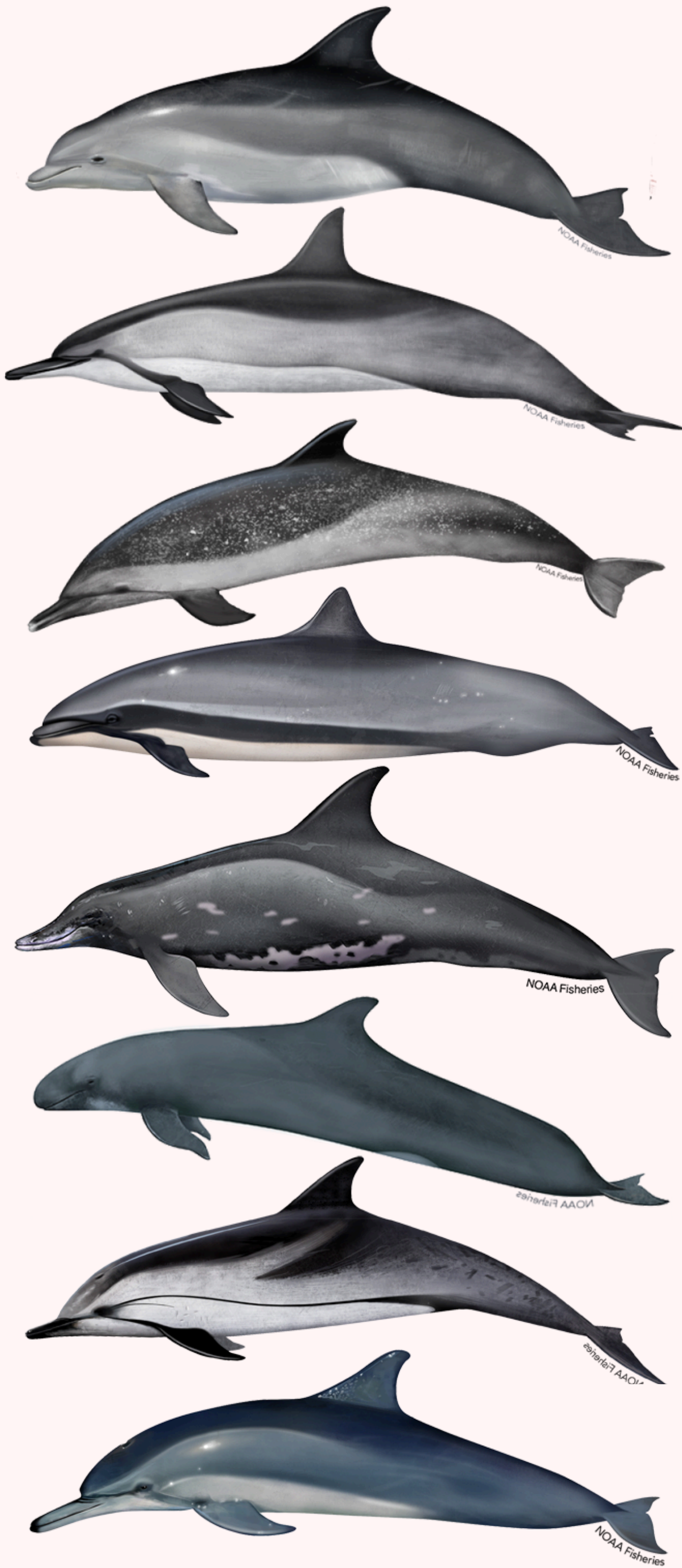


CONSERVATION CONNECTIONS

MARCH 2025

SPECIES OF DOLPHINS (FAMILY: DELPHINIDAE) FOUND IN HAWAI'I AND BERMUDA



International Union for Conservation of Nature (IUCN)

- **BOTTLENOSE DOLPHIN (HI/BDA)**
IUCN Conservation status: Least Concern
- **SPINNER DOLPHIN (HI/BDA)**
IUCN Conservation status: Least Concern
Eastern spinner dolphin: Vulnerable
- **SPOTTED DOLPHIN (HI/BDA)**
Pantropical spotted dolphin: Least Concern
Atlantic spotted dolphin: Least Concern
- **FRASER'S DOLPHIN (HI/BDA)**
IUCN Conservation status: Least Concern
NOAA estimate 10,000 in the Hawaiian stock.
- **ROUGH-TOOTHED DOLPHIN (HI)**
IUCN Conservation status: Least Concern
- **FALSE KILLER WHALE (HI)**
IUCN Conservation status: Near Threatened
Hawaiian insular false killer whale population numbers < 200 individuals and are listed as endangered.
- **STRIPED DOLPHIN (BDA)**
IUCN Conservation status: Least Concern
- **CLYMENE DOLPHIN (BDA)**
IUCN Conservation status: Least Concern

Click for: [Resident whale and dolphins of Hawai'i](#)

Check this out!

[Ocean Biodiversity Information System Spatial Ecological Analysis of Megavertebrate Populations](#)



OBIS-SEAMAP maps marine species distributions and biodiversity to enhance ecological understanding and support global conservation.

What Is Happening?

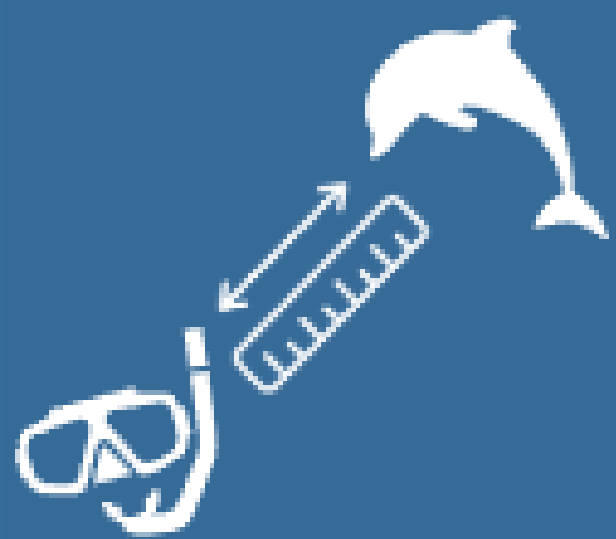
Most common threats amongst these species are:

- Entanglement in fishing gear
- Marine debris/Pollution
- Illegal feeding and harassment
- Ocean noise
- Hunting



MICROPLASTICS DETECTED IN DOLPHIN BREATH

U.S. researchers have detected microplastic particles in air exhaled by wild bottlenose dolphins.



PROTECTING DOLPHINS FROM HARRASMENT IS NOT EASY

Despite NOAA Fisheries' 50-yard distance rule for dolphins, violations continue. In 2024 on the Big Island, 47 citations led to \$10,900 in fines.



DOLPHINS 'SHOUT' OVER LOUD UNDERWATER NOISE

Human-generated noise can negatively impact the health of wild dolphins. The Current Biology journal study shows dolphins "shout" to cooperate as underwater noise increases.



FALSE KILLER WHALE'S ENCOUNTER WITH LONGLINE

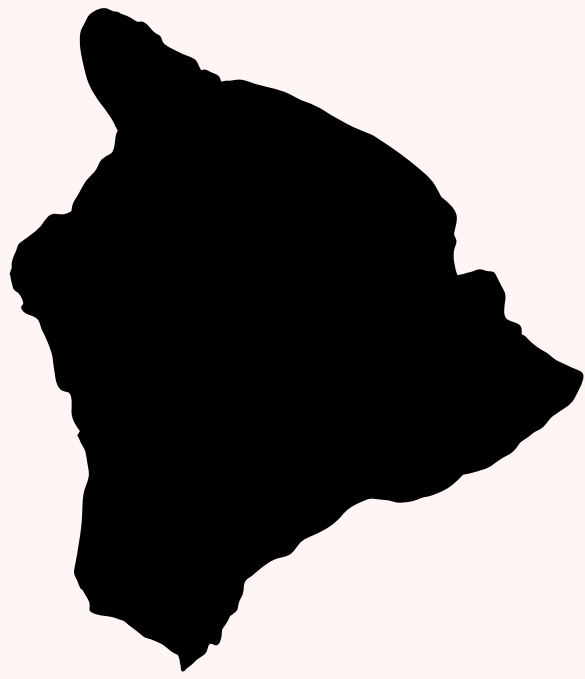
Researchers and fishermen discovered new insights into a behavior causing false killer whales to become entangled in fishing gear.

Click on the underlined titles to read more about these studies



How to Get Involved?

By protecting their environment we are also protecting them.



Volunteer with local conservation groups like [Hawai'i Wildlife Fund, Clean Rewards](#)



Volunteer with local conservation groups like [Sustainable Coastlines Hawai'i](#) or [Hawai'i Marine Animal Response](#).



Volunteer with local conservation groups like [Keep Bermuda Beautiful](#) for monthly clean-ups.

Report sick or injured wildlife as well as any potential marine wildlife harassment:

- Hawai'i: NOAA Marine Wildlife Hotline (888) 256-9840
- Bermuda: Wildlife Receipt Centre at Bermuda Aquarium, Museum and Zoo (441) 293-2727

Stay Informed

Webinars and blogs offer an accessible and efficient way to keep informed about new research, emerging technologies, and best practices in the field. They provide the opportunity to learn directly from experts, engage in discussions, and ask questions.

Some organizations that offer these:

- [Dolphin Communication Project](#)
- [International Union for Conservation of Nature and Natural Resources](#)
- [National Marine Mammal Foundation](#)
- [National Marine Sanctuaries](#)
- [Open Communications for the Ocean](#)