

CONSERVATION CONNECTIONS

February 2025



WHO?

Humpback whales are often spotted migrating around the islands of Hawaii and Bermuda.



WHEN?

In Bermuda, it is common to see humpback whales migrating between March and April.

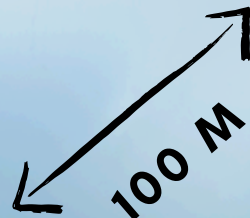
In Hawaii, humpback whales can be seen migrating from November to March.

WHY?

Migrating to warm, shallow waters is ideal for mating, giving birth, and raising calves. In Bermuda, the whales are on their way to the Caribbean Sea. In the Pacific, the Hawaiian Islands are their seasonal destination.

HOW CLOSE CAN I GET?

The Government of Bermuda and National Oceanic and Atmospheric Administration (U.S.) prohibit wildlife viewers from coming within **100 meters** (~300 feet) of whales, or the length of one football field.

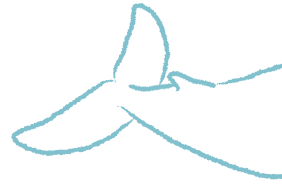




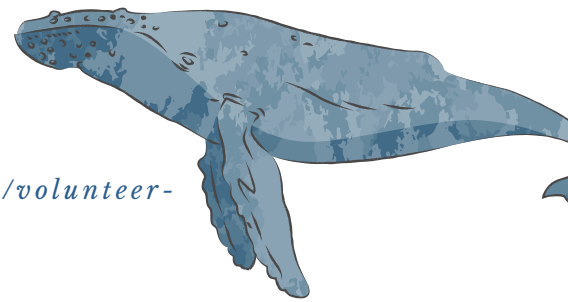
UPCOMING VOLUNTEER DATES (HI, USA)

Sanctuary Ocean Count (Big Island, Oahu, Kauai) & Pacific Whale Foundation (Maui)

January 25
February 22
March 29



HOW CAN I GET INVOLVED?



Hawaii (Big Island, Oahu, Kauai): <https://oceancount.org/>

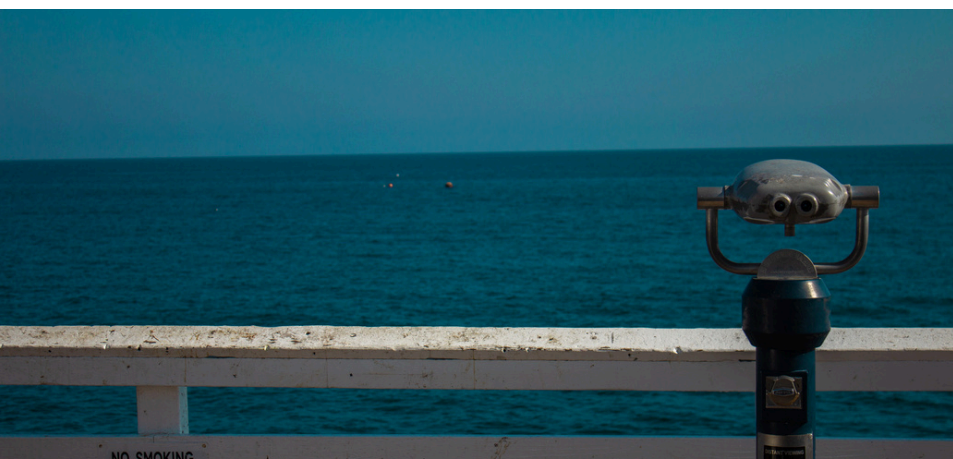
Hawaii (Maui): <https://www.pacificwhale.org/how-you-can-help/volunteer-opportunities/great-whale-count/>

*Bermuda: <https://happywhale.com/home>
<https://www.zooniverse.org/projects/tedcheese/snapshots-at-sea-whale-identification>*

The linked organizations above offer ways for you to help local conservation groups to identify and collect data on locally migrating whales.

In Hawaii, you can register to volunteer on a date to note the number of whales seen and their behavior.

In Bermuda, submit your photos of humpback whales to add to HappyWhale's identification database and track recurring individuals. Or, help identify whales from existing images using unique markings.



What other species could I see?

In Hawaii:

Pilot whale
False killer whale
Sperm whale
Sei whale
Fin whale
Minke whale
Blue whale
Bryde's whale
North Pacific right whale
Gray whale

In Bermuda:

Pygmy sperm whale
Pilot whale

